



DRAWING REGISTER	
Layout No:	Layout Name
	COVER SHEET
C101-U	DEVELOPMENT AREA SCHEDULE
C103-U	BUILDING FOOTPRINT
C110-U	CONSTRUCTION MANAGEMENT PLAN
C111-U	SITE LANDSCAPE AND REHABILITATION PLAN
C201-U	BASEMENT 3 FLOOR PLAN
C202-U	BASEMENT 2 FLOOR PLAN
C203-U	BASEMENT 1 FLOOR PLAN
C204-U	GROUND FLOOR PLAN
C205-U	LEVEL 1 FLOOR PLAN
C206-U	LEVEL 2 FLOOR PLAN
C207-U	MEZZANINE FLOOR PLAN
C501-U	EAST ELEVATION
C502-U	WEST ELEVATION
C503-U	SOUTH ELEVATION
C504-U	NORTH ELEVATION
C505-U	CROSS SECTION A-A
C506-U	CROSS SECTION B-B
C801-U	EXCAVATION DIAGRAM
C802-U	SUB FLOOR PLAN
C901-U	PERSPECTIVE VIEWS



PLANNING and ENVIRONMENT ACT
ALPINE RESORTS PLANNING SCHEME

PERMIT NO. 2010024370A-2
CONDITIONS 1 a, b, c, f, g, h, i and k
ENDORSED PLAN
 Sheet 1 of 21

 Signed: *Wood* for
MINISTER FOR PLANNING
 Date: 16 MAY 2018

Davenport Central Project

COVER SHEET

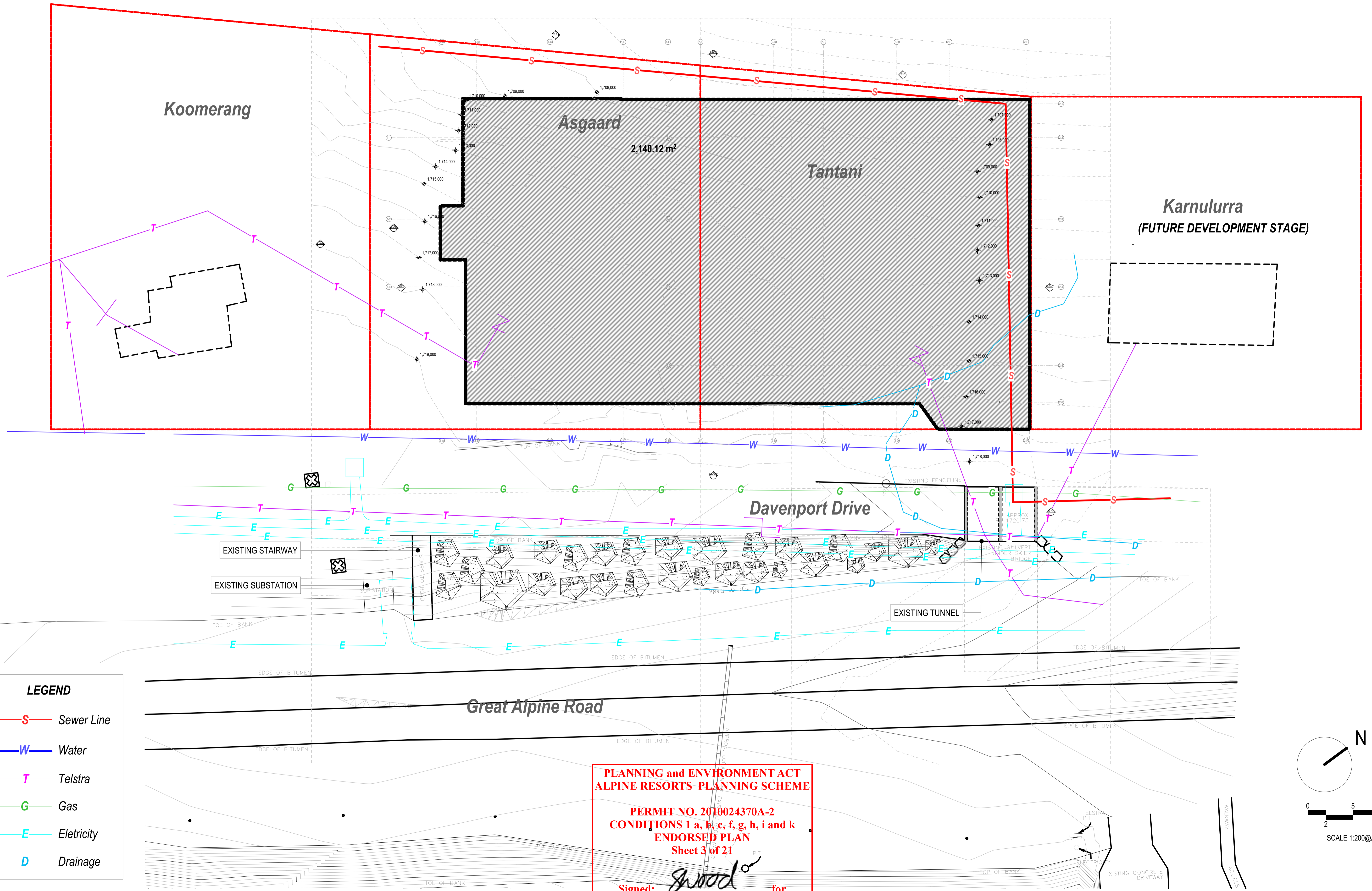
Date: Wednesday, March 7, 2018
 Drawn: SZ
 Printed: Wednesday, March 7, 2018
 File: W:\Projects\2015009 Aspen Tarnant development\CAD05
 Arch\CAD\2015009 Aspen Tarnant Development 20.plt
 Plotter: - Output to: - System No:
 2013053SK

AREA SUMMARY			
<i>Floor</i>	<i>Code</i>	<i>Name</i>	<i>Area</i>
Staff Accommodation			
	C01	STAIR	14.00
	C02	LIFT/CORE	40.39
	C03	STAIR	7.98
	L01	STAFF ACCOMMODATION	621.43
			683.80 m²
Basement Level 2			
	C01	STAIR	14.00
	C02	LIFT/CORE	39.69
	L04	STAFF ACCOMMODATION	622.08
	P03	CAR PARK 3	799.90
			1,475.67 m²
Basement Level 1			
	C01	STAIR	14.00
	C02	LIFT/CORE	38.61
	L05	ALL ACCESS TOURIST APARTMENTS	418.94
	P01	CAR PARK 1	1,164.97
	P01	CAR PARK 2	521.02
			2,157.54 m²
Ground Level			
	A01	APARTMENT FOYER	34.18
	C01	STAIR	14.00
	C02	LIFT/CORE	35.64
	C03	STAIR	9.45
	L03	ASGAARD LODGE	373.32
	R01	RETAIL/COMMERCIAL	806.39
	T01	Amenities	42.00
			1,314.98 m²
Lodge/Office			
	A04	TOURIST APARTMENTS	546.76
	C01	STAIR	14.00
	C02	LIFT/CORE	42.34
	C03	STAIR	18.20
	L02	ASGAARD LODGE	355.37
			976.67 m²
Level 2 (Apartment)			
	A05	APARTMENT	536.24
	C01	STAIR	14.00
	C02	LIFT/CORE	33.31
			583.55 m²
			7,192.21 m²

PLANNING and ENVIRONMENT ACT
ALPINE RESORTS PLANNING SCHEME

PERMIT NO. 2010024370A-2
CONDITIONS 1 a, b, c, f, g, h, i and k
ENDORSED PLAN
Sheet 2 of 21

 Signed: *Shwood* for
MINISTER FOR PLANNING
 Date: 16 MAY 2018



**PLANNING and ENVIRONMENT ACT
ALPINE RESORTS PLANNING SCHEME**

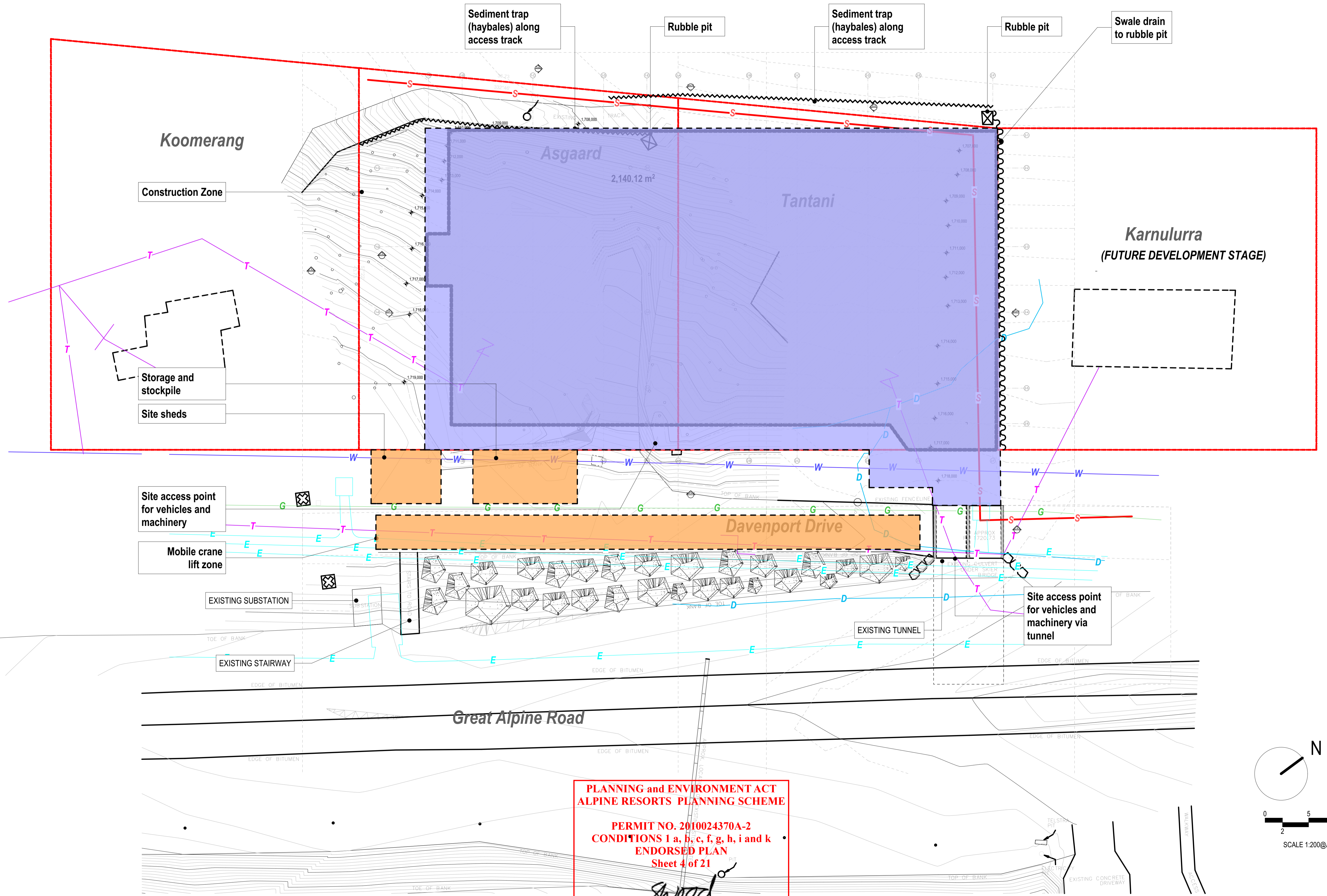
**PERMIT NO. 2010024370A-2
CONDITIONS 1 a, b, c, f, g, h, i and k
ENDORSED PLAN
Sheet 3 of 21**

Signed: *Wood* for
MINISTER FOR PLANNING
Date: 16 MAY 2018

Davenport Central Project

BUILDING FOOTPRINT

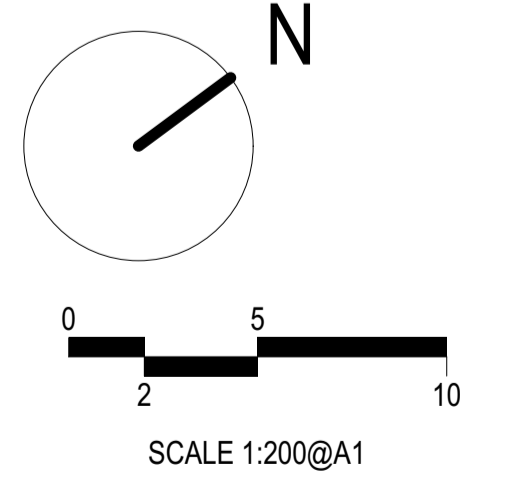
Date: Wednesday, March 7, 2018
Drawn: SZ
Printed: Wednesday, March 7, 2018
File: W:\Projects\2015009 Asgard Tantani development\CAD05
Arch\CAD\2015009 Asgard Tantani Development 20.plt
Project: Davenport - Review 01
2013053SKC103-U



**PLANNING and ENVIRONMENT ACT
ALPINE RESORTS PLANNING SCHEME**

**PERMIT NO. 2010024370A-2
CONDITIONS 1 a, b, c, f, g, h, i and k
ENDORSED PLAN
Sheet 4 of 21**

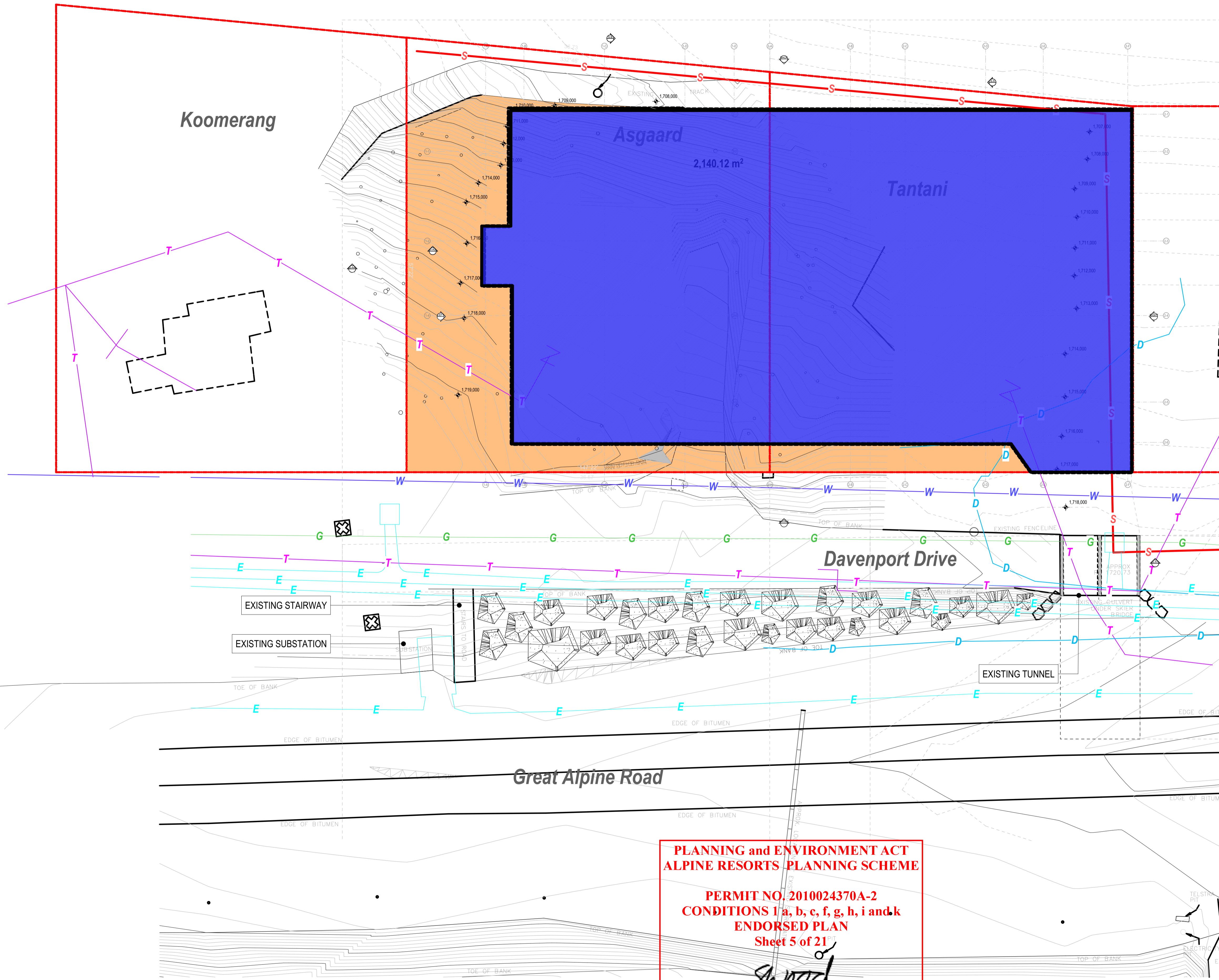
Signed: *Shood* for
MINISTER FOR PLANNING
Date: 16 MAY 2018



Davenport Central Project

CONSTRUCTION MANAGEMENT PLAN

Date: Wednesday, March 7, 2018
 Drawn: SZ
 Printed: Wednesday, March 7, 2018
 File: W:\Projects\2015009 Asgard Tantani development\CAD005
 Arch\CAD\2015009 Asgard Tantani development 20.plt
 Project: - Drawing: - Revision: -
 2013053SKC110-U
 P. 8488200



LEGEND

- PROPOSED BLDG FOOTPRINT
- REHABILITATION AREA

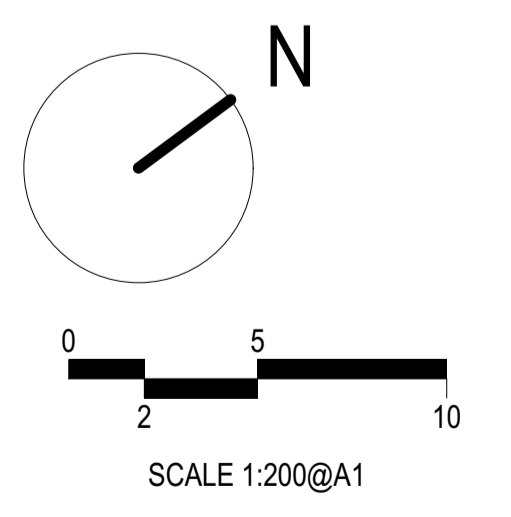
PLANTING SCHEDULE FOR REHABILITATION AREA:

- WET AREAS:**
 CAREX APPRESSA - TALL SEDGE
 ISOLEPIS SPP - CLUB RUSHES
- GRASS GROUND COVERS**
 POA COSTINIANA
 POA HOTHAMENSIS
 POA ANNUA
 POA PRATENSIS
- OTHER GROUND COVERS**
 BRACHYSCOME DECIPIENS - FIELD DAISY
 HELICHRYSUM RUTIDOLEPIS - PALE EVERLASTING
 OLEARIA FROSTII - BOGONG DAISY
 OZOMANTHUS ALPINUM - MOUNTAIN EVERLASTING
 SCAEVOLA HOOKERI - CREEPING FAN FLOWER
- SHRUBS**
 EPACRIS GUNNII - ??? HEATH
 LEUCOPOGON HOOKERI - MOUNTAIN BEARD HEATH
 BOSSIAE FOLIOSA - LEAFY BOSSIAE
 KUNZEA ERICIFOLIA - YELLOW FLOWERED KUNZEA
 GREVILLEA AUSTRALIS - ALPINE GREVILLEA
 PRIMELEA ALPINA + P. AXIFLORA + P. LIGUSTRINA - PIMELEA SPECIES
- TREES**
 E. PAUCIFLORA - SNOWGUM
- NOTE:**
 PLANT SHRUBS FROM TUBE STOCK OR 150mm DIA.
 POTS AT 1 PER SQUARE METRE. PLANT ALL OTHERS AT
 6-8 PER SQUARE METRE AS CELLS OR TUBE STOCK.

**PLANNING and ENVIRONMENT ACT
 ALPINE RESORTS PLANNING SCHEME**

**PERMIT NO. 2010024370A-2
 CONDITIONS 1 a, b, c, f, g, h, i and k
 ENDORSED PLAN
 Sheet 5 of 21**

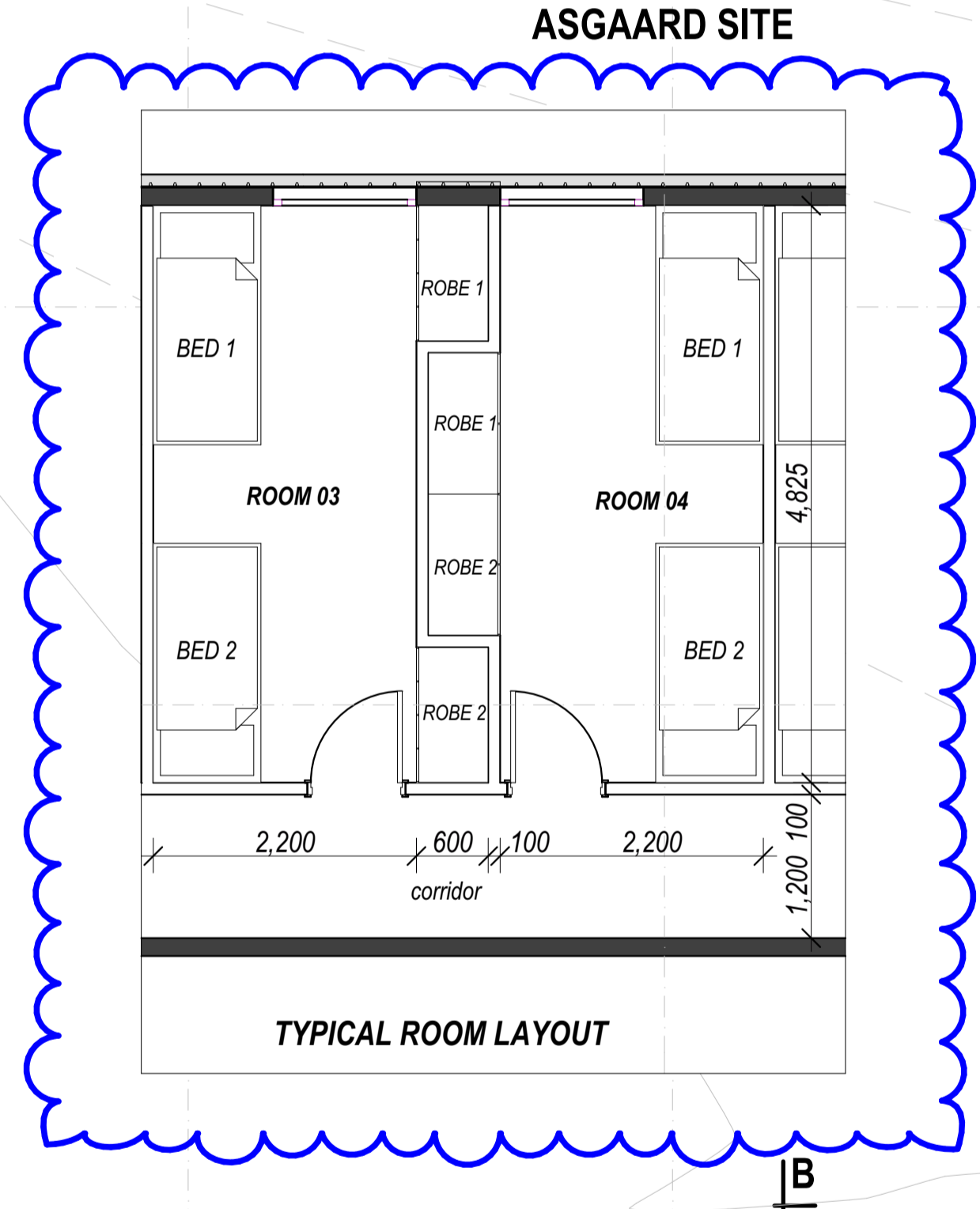
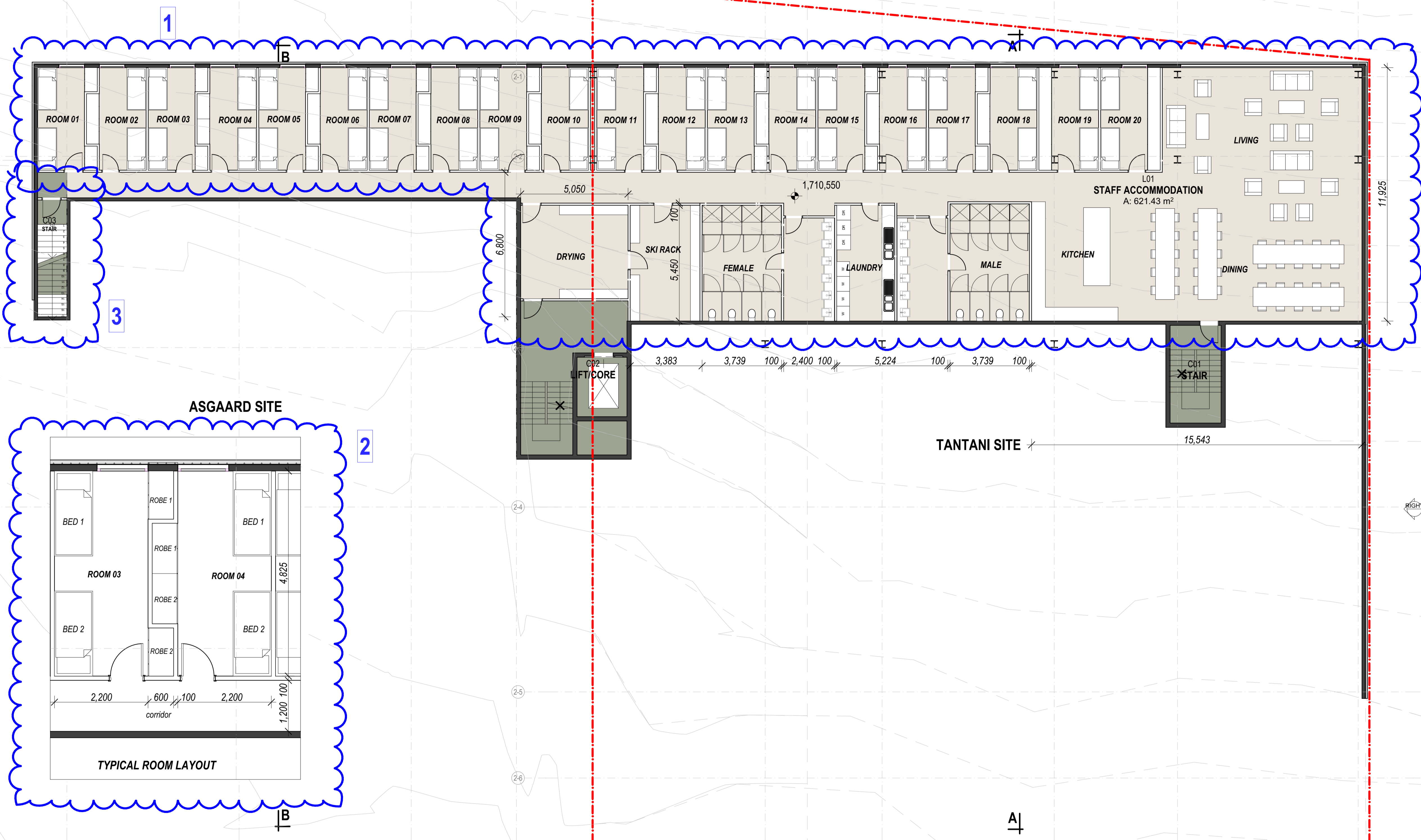
Signed: *Wood* for
MINISTER FOR PLANNING
 Date: 16 MAY 2018



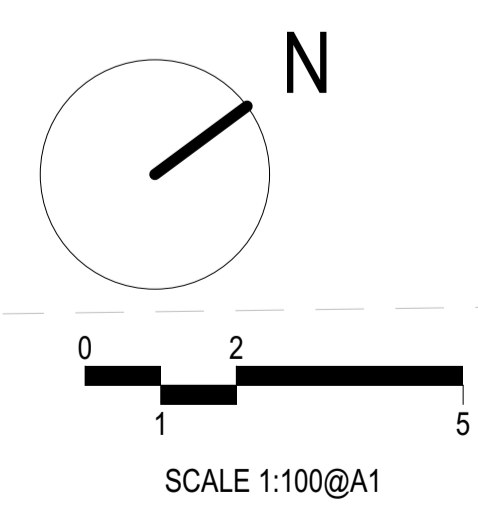
Davenport Central Project

**SITE LANDSCAPE AND
 REHABILITATION PLAN**

Date: Wednesday, March 7, 2018
 Drawn: SZ
 Project: Wednesday, March 7, 2018
 File: W:\Projects\2015009 Asgard Tantani Development\CAD05
 Arch\CAD\2015009 Asgard Tantani Development 20.plt
 Project#: 2015009 - Revise No:
 2013053SKC111-U



- LEGEND**
- STAFF ACCOMMODATION
 - COMMERCIAL AMENITIES
 - ASGAARD LODGE
 - RETAIL/COMMERCIAL
 - STAIR/LIFT
 - CAR PARK
 - TOURIST APARTMENT



**PLANNING and ENVIRONMENT ACT
ALPINE RESORTS PLANNING SCHEME**

**PERMIT NO. 2010024370A-2
CONDITIONS 1 a, b, c, f, g, h, i and k
ENDORSED PLAN
Sheet 6 of 21**

Signed: *Wood* for
MINISTER FOR PLANNING
Date: 16 MAY 2018

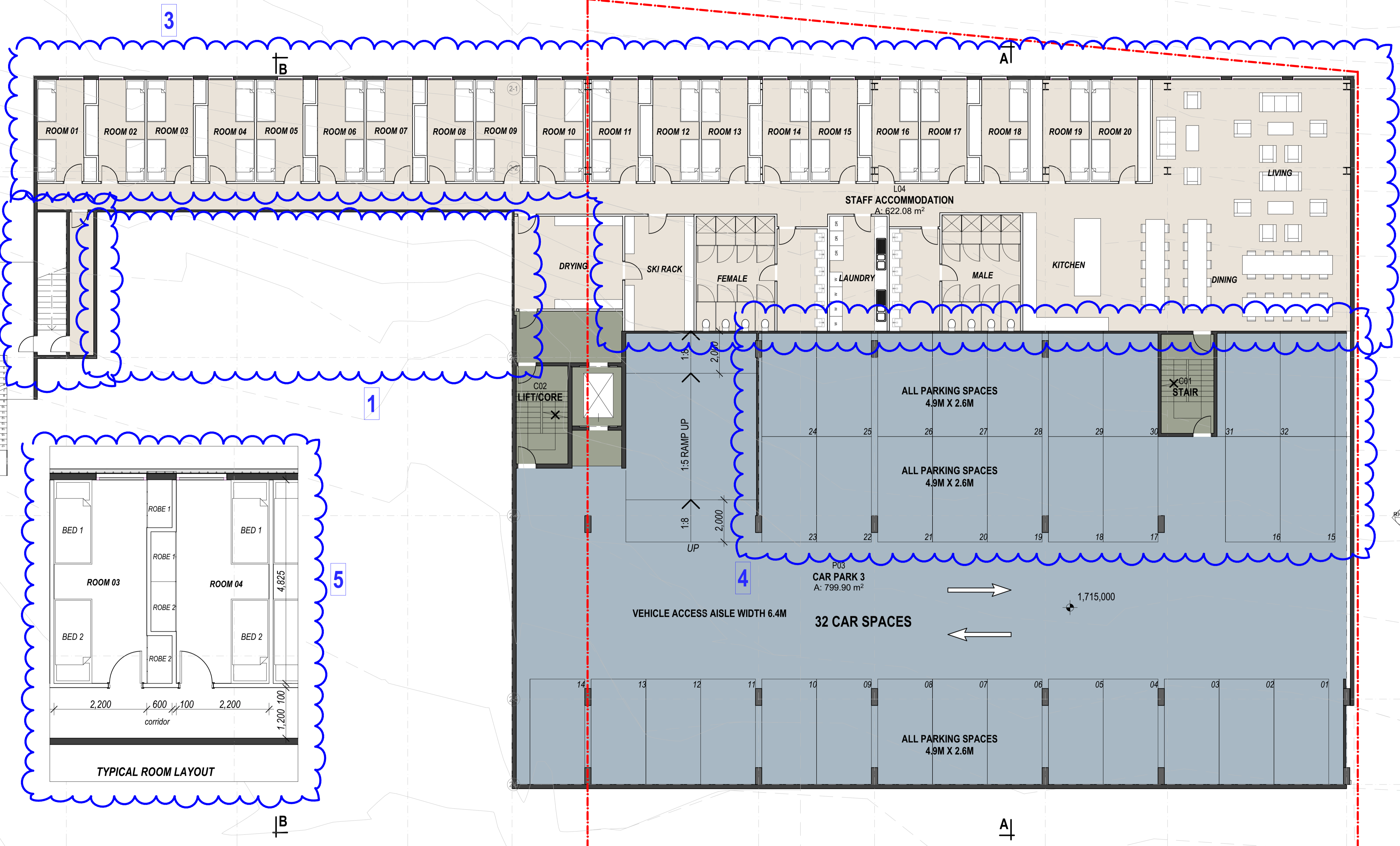
CONSTRUCTION TO BE TO A MINIMUM BAL-40 STANDARD
IN ACCORDANCE WITH THE RELEVANT SECTIONS OF
AS3959-2009 CONSTRUCTION OF BUILDINGS IN A BUSHFIRE PRONE AREA

Davenport Central Project

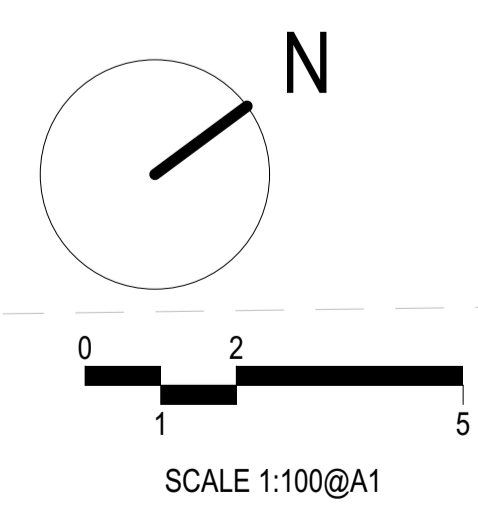
BASEMENT 3 FLOOR PLAN

Date: Wednesday, March 7, 2018
Drawn: SZ
Project: Wednesday, March 7, 2018
File: W:\Projects\2015009 Asgard Tantaroi development\CAD05
Arch\CAD\2015009 Asgard Tantaroi Development 20.plt
Project: - Drawing: - Revision No:
2013053SKC201-U





- LEGEND**
- STAFF ACCOMMODATION
 - COMMERCIAL AMENITIES
 - ASGAARD LODGE
 - RETAIL/COMMERCIAL
 - STAIR/LIFT
 - CAR PARK
 - TOURIST APARTMENT



**PLANNING and ENVIRONMENT ACT
ALPINE RESORTS PLANNING SCHEME**

**PERMIT NO. 2010024370A-2
CONDITIONS 1 a, b, c, f, g, h, i and k
ENDORSED PLAN
Sheet 7 of 21**

Signed: *Wood* for
MINISTER FOR PLANNING
Date: 16 MAY 2018

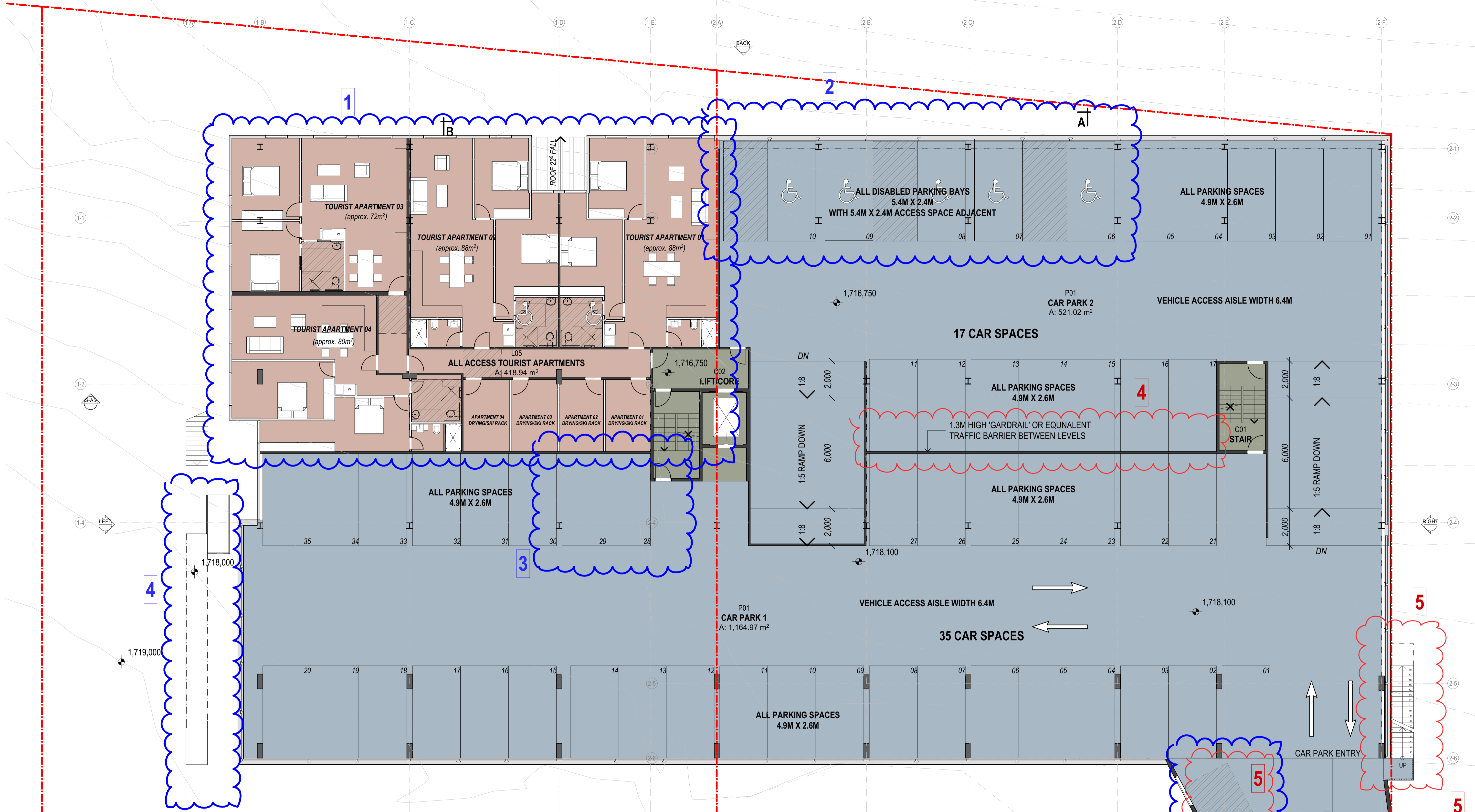
CONSTRUCTION TO BE TO A MINIMUM BAL-40 STANDARD
IN ACCORDANCE WITH THE RELEVANT SECTIONS OF
AS3959-2009 CONSTRUCTION OF BUILDINGS IN A BUSHFIRE PRONE AREA

Davenport Central Project

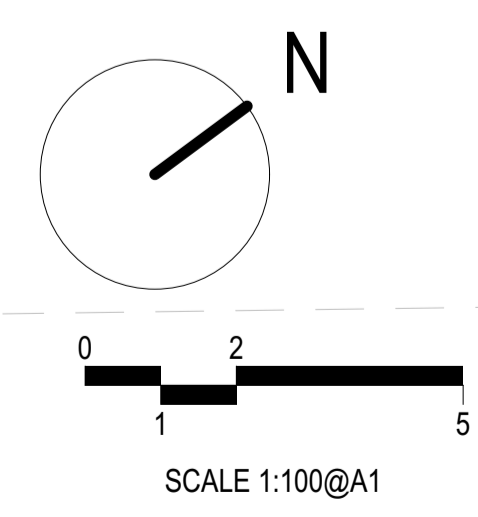
BASEMENT 2 FLOOR PLAN

Date: Wednesday, March 7, 2018
Drawn: SZ
Printed: Wednesday, March 7, 2018
File: W:\Projects\2015009 Asgard Tourist Development\CAD05
Arch\CAD\2015009 Asgard Tourist Development 20.plt
Project: - Drawing: - Revision: -
1213053SKC202-U





- LEGEND**
- STAFF ACCOMMODATION
 - COMMERCIAL AMENITIES
 - ASGAARD LODGE
 - RETAIL/COMMERCIAL
 - STAIR/LIFT
 - CAR PARK
 - TOURIST APARTMENT



**PLANNING and ENVIRONMENT ACT CONSTRUCTION TO BE TO A MINIMUM BAL-40 STANDARD
ALPINE RESORTS PLANNING SCHEME IN ACCORDANCE WITH THE RELEVANT SECTIONS OF
AS3959-2009 CONSTRUCTION OF BUILDINGS IN A BUSHFIRE PRONE AREA**

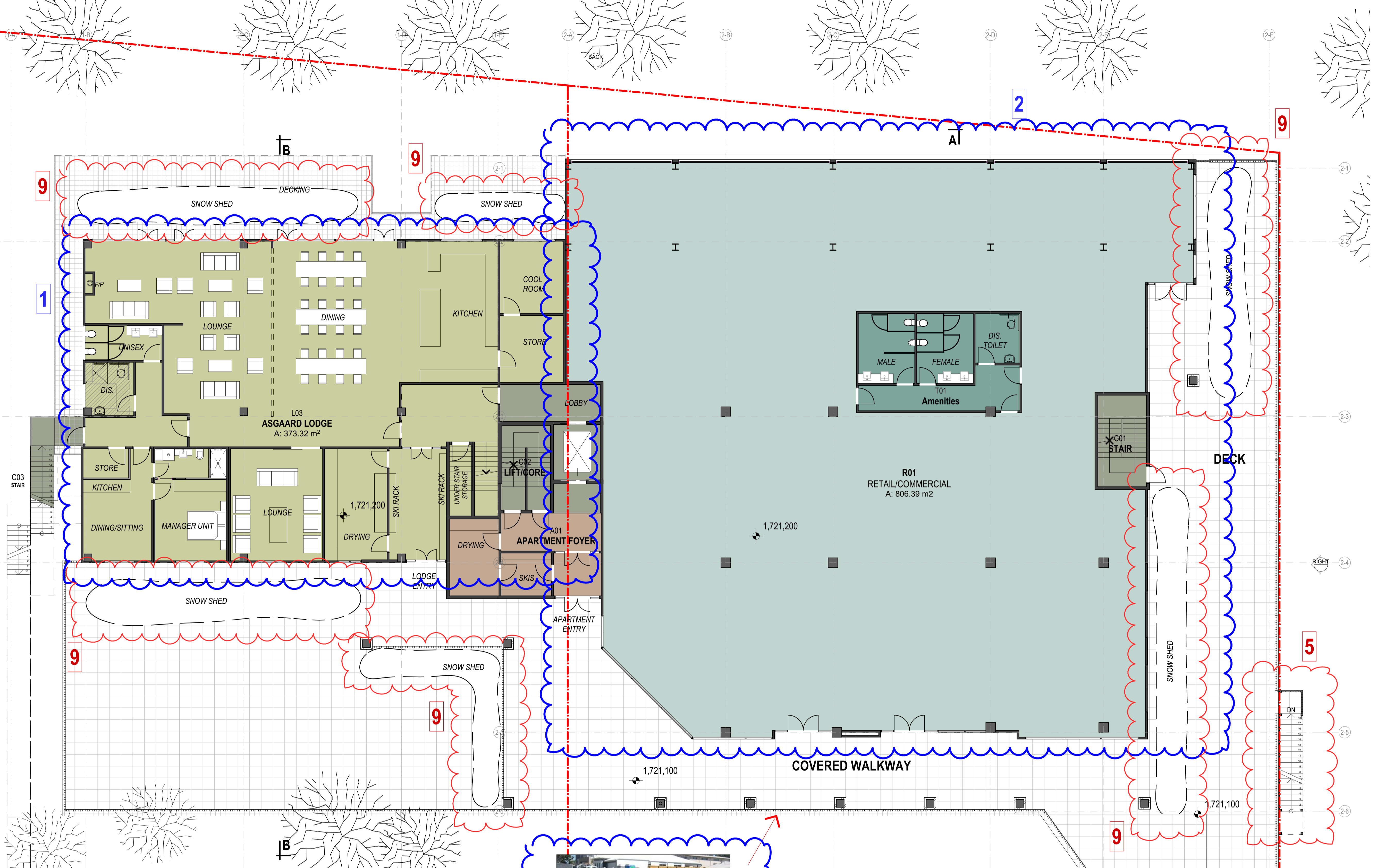
**PERMIT NO. 2010024370A-2
CONDITIONS 1 a, b, c, f, g, h, i and k
ENDORSED PLAN
Sheet 8 of 21**

Signed: *Wood* for
MINISTER FOR PLANNING
Date: 16 MAY 2018

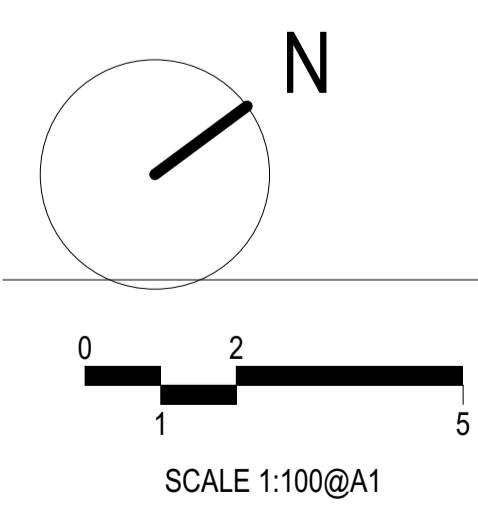
BASEMENT 1 FLOOR PLAN

Date: Thursday, March 22, 2018
Drawn: SZ
Printed: Thursday, March 22, 2018
File: W:\Projects\201509 Aspen Tarnant development\CAD05
Arch\CAD\201509 Aspen Tarnant development 20.plt
Project: Aspen Tarnant - Resort
2013053SKC203-U

Davenport Central Project



- LEGEND**
- STAFF ACCOMMODATION
 - COMMERCIAL AMENITIES
 - ASGAARD LODGE
 - RETAIL/COMMERCIAL
 - STAIR/LIFT
 - CAR PARK
 - TOURIST APARTMENT



**PLANNING and ENGINEERING
ALPINE RESORTS PLANNING SCHEME**

PERMIT NO. 2010024370-A-1

CONDITIONS 1 a, b, c, FENCING DETAIL

ENDORSEMENT SHEET 9

MINISTER FOR PLANNING

Date: 16 MAY 2018

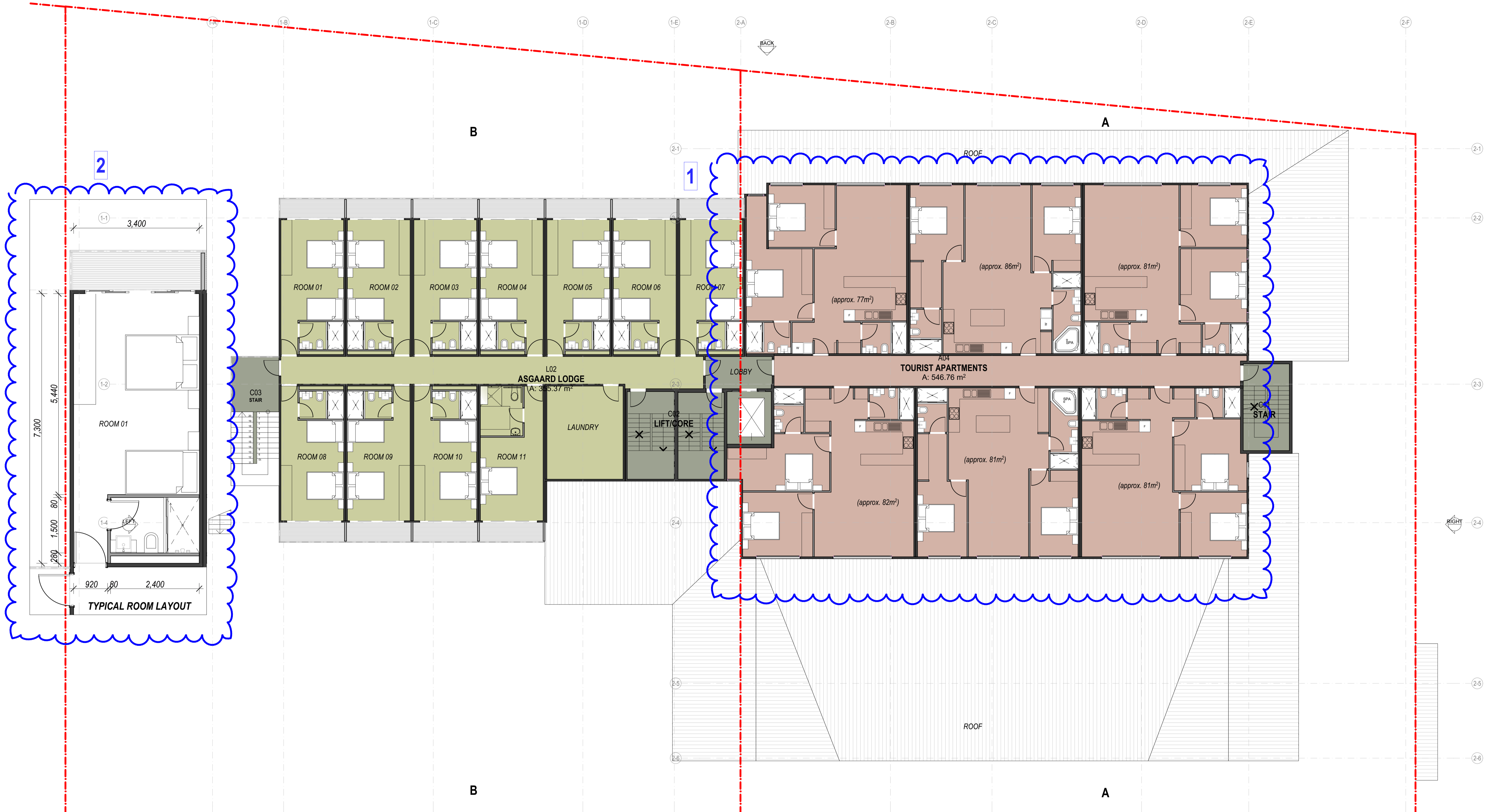


DAVENPORT DRIVE

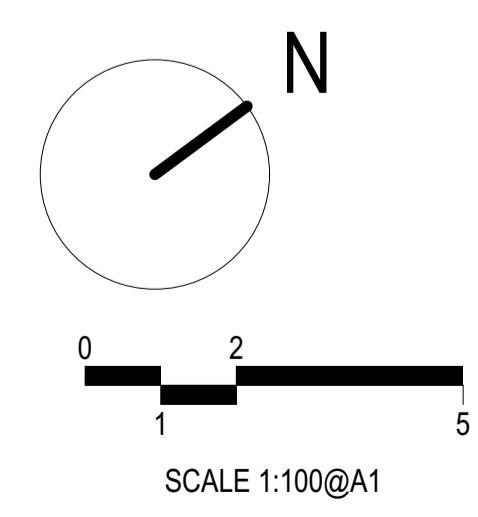
**CONSTRUCTION TO BE TO A MINIMUM BAL-40 STANDARD
IN ACCORDANCE WITH THE RELEVANT SECTIONS OF
AS3959-2009 CONSTRUCTION OF BUILDINGS IN A BUSHFIRE PRONE AREA**

GROUND FLOOR PLAN

Date: Thursday, March 22, 2018
Drawn: SZ
Printed: Thursday, March 22, 2018
File: W:\Projects\201509 Asgard Tenant Development\CAD05
Arch\CAD\201509 Asgard Tenant Development 20.plt
Project: Davenport Central
2013053SKC204-U
P. 84888200



- LEGEND**
- STAFF ACCOMMODATION
 - COMMERCIAL AMENITIES
 - ASGAARD LODGE
 - RETAIL/COMMERCIAL
 - STAIR/LIFT
 - CAR PARK
 - TOURIST APARTMENT



**PLANNING and ENVIRONMENT ACT
ALPINE RESORTS PLANNING SCHEME**

**PERMIT NO. 2010024370A-2
CONDITIONS 1 a, b, c, f, g, h, i and k
ENDORSED PLAN
Sheet 10 of 21**

Signed: *Wood* for
MINISTER FOR PLANNING
Date: 16 MAY 2018

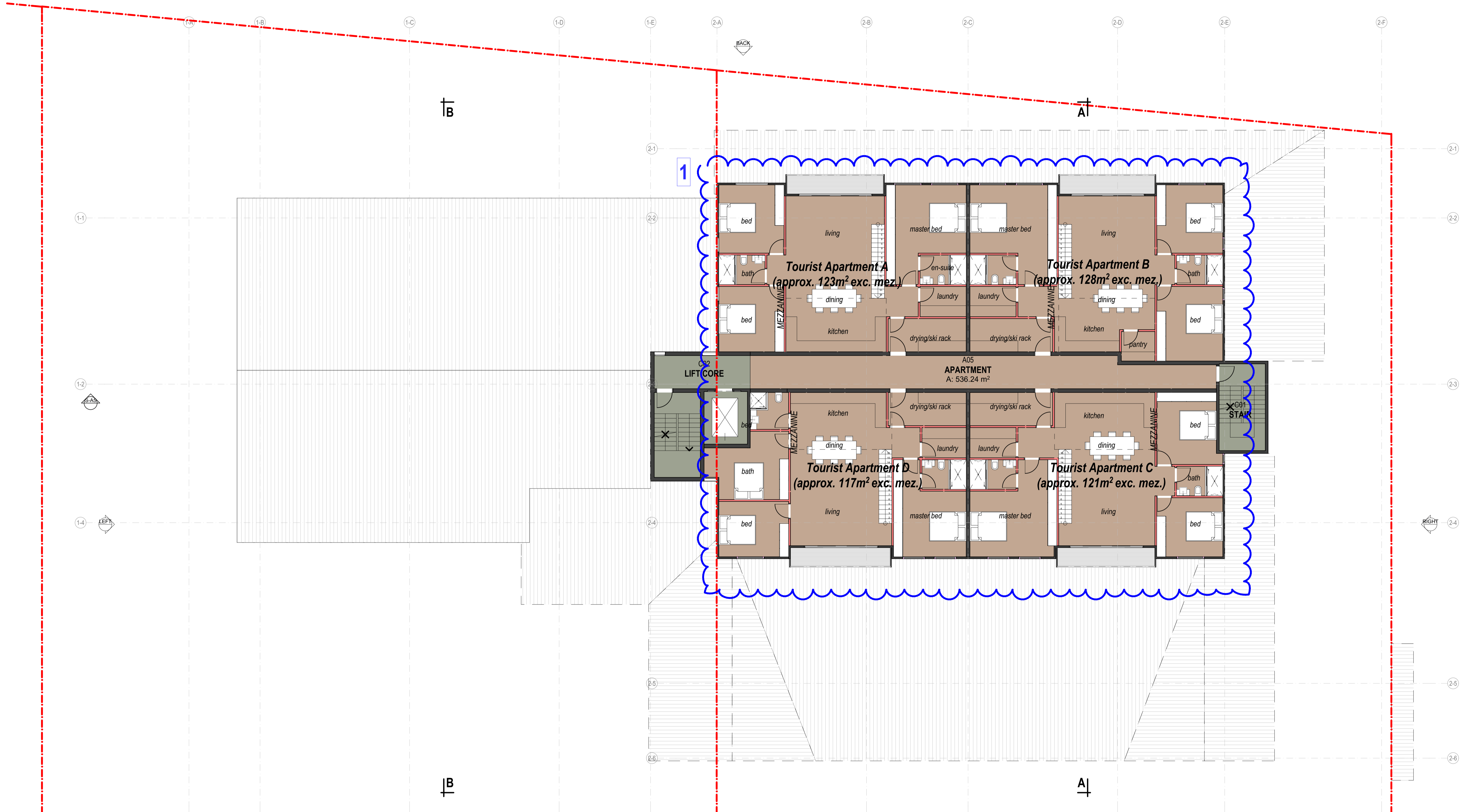
CONSTRUCTION TO BE TO A MINIMUM BAL-40 STANDARD
IN ACCORDANCE WITH THE RELEVANT SECTIONS OF
AS3959-2009 CONSTRUCTION OF BUILDINGS IN A BUSHFIRE PRONE AREA

Davenport Central Project

LEVEL 1 FLOOR PLAN

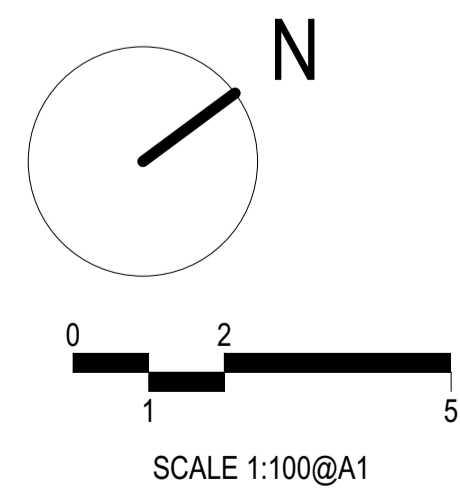
Date: Wednesday, March 7, 2018
Drawn: SZ
Printed: Wednesday, March 7, 2018
File: W:\Projects\2015009 Asgard Tentant development\CAD05
Arch\CAD\2015009 Asgard Tentant Development 20.plt
Project: - Drawing: - Revision No:
2013053SKC205-U





LEGEND

- STAFF ACCOMMODATION
- COMMERCIAL AMENITIES
- ASGAARD LODGE
- RETAIL/COMMERCIAL
- STAIR/LIFT
- CAR PARK
- TOURIST APARTMENT



**PLANNING and ENVIRONMENT ACT
ALPINE RESORTS PLANNING SCHEME**

**PERMIT NO. 2010024370A-2
CONDITIONS 1 a, b, c, f, g, h, i and k
ENDORSED PLAN
Sheet 11 of 21**

Signed: *Wood* for
MINISTER FOR PLANNING
Date: 16 MAY 2018

**CONSTRUCTION TO BE TO A MINIMUM BAL-40 STANDARD
IN ACCORDANCE WITH THE RELEVANT SECTIONS OF
AS3959-2009 CONSTRUCTION OF BUILDINGS IN A BUSHFIRE PRONE AREA**

Davenport Central Project

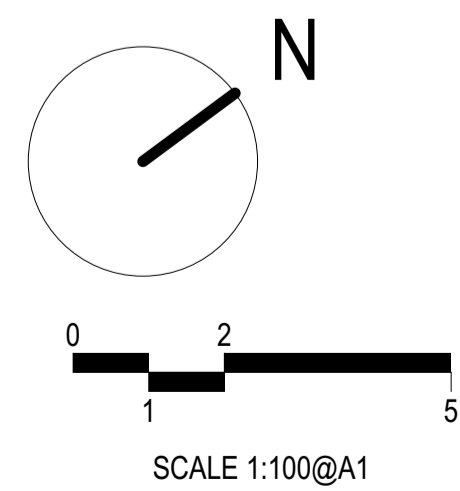
LEVEL 2 FLOOR PLAN

Date: Wednesday, March 7, 2018
Drawn: SZ
Printed: Wednesday, March 7, 2018
File: W:\Projects\2015009 Asgard Towers development\CAD05
Arch\CAD\2015009 Asgard Towers development 20.plt
Project: Davenport - Retail Rev.
2013053SKC206-U



LEGEND

- STAFF ACCOMMODATION
- COMMERCIAL AMENITIES
- ASGAARD LODGE
- RETAIL/COMMERCIAL
- STAIR/LIFT
- CAR PARK
- TOURIST APARTMENT



**PLANNING and ENVIRONMENT ACT
ALPINE RESORTS PLANNING SCHEME**

**PERMIT NO. 2010024370A-2
CONDITIONS 1 a, b, c, f, g, h, i and k
ENDORSED PLAN
Sheet 12 of 21**

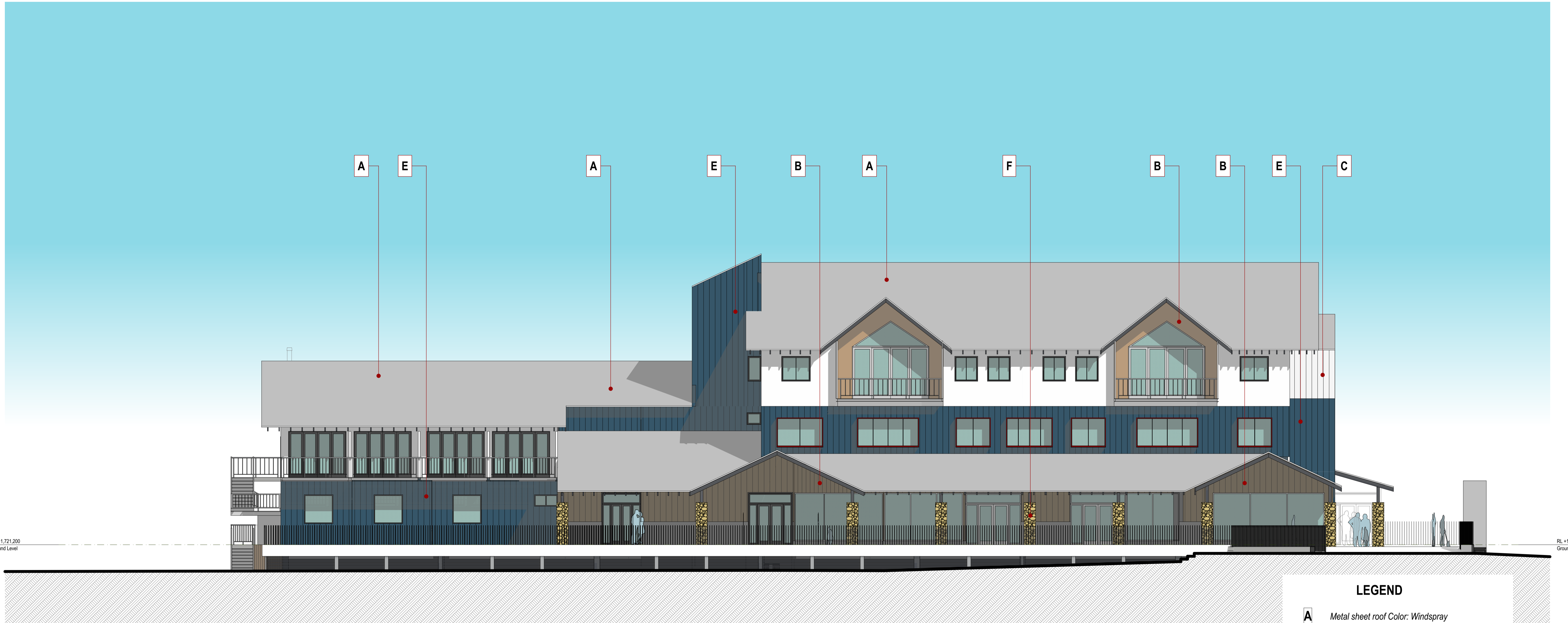
Signed: *Wood* for
MINISTER FOR PLANNING
Date: 16 MAY 2018

**CONSTRUCTION TO BE TO A MINIMUM BAL-40 STANDARD
IN ACCORDANCE WITH THE RELEVANT SECTIONS OF
AS3959-2009 CONSTRUCTION OF BUILDINGS IN A BUSHFIRE PRONE AREA**

Davenport Central Project

MEZZANINE FLOOR PLAN

Date: Wednesday, March 7, 2018
Drawn: SZ
Printed: Wednesday, March 7, 2018
File: W:\Projects\2015009 Asgard Taniari development\CAD05
Arch\CAD\2015009 Asgard Taniari Development 20.plt
Project: Davenport - Taniari
2013053SKC207-U



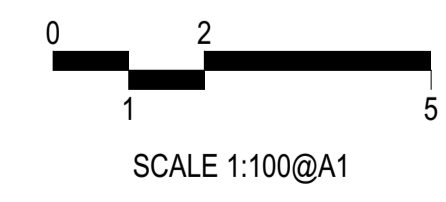
LEGEND

- A** Metal sheet roof Color: Windspray
- B** JH Axon 133 Painted Color: Brown
- C** ColorBond Metal Cladding Color: Surfmist
- D** ColorBond Metal Cladding Color: Ironstone
- E** ColorBond Metal Cladding Color: Deep Ocean
- F** Natural stone Veneer
- G** metal screen
- H** Concrete Finish
- J** Blockwork

CONSTRUCTION TO BE TO A MINIMUM BAL-40 STANDARD
 IN ACCORDANCE WITH THE RELEVANT SECTIONS OF
 AS 3959-2009 CONSTRUCTION OF BUILDINGS IN A BUSHFIRE PRONE AREA

PERMIT NO. 2010024370A-2
CONDITIONS 1 a, b, c, f, g, h, i and k
ENDORSED PLAN
Sheet 13 of 21

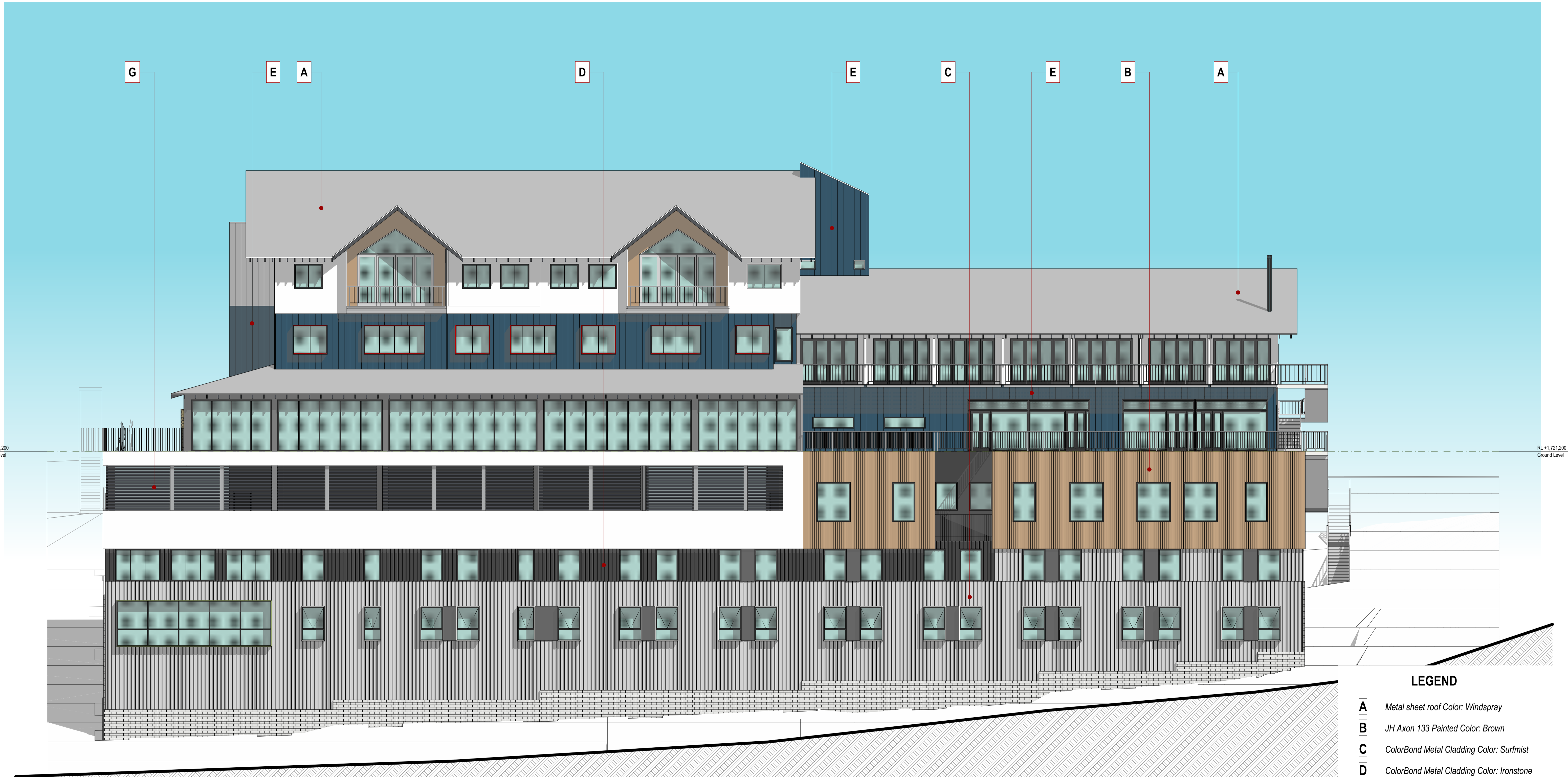
Signed: *Wood* for
MINISTER FOR PLANNING
 Date: 16 MAY 2018



Davenport Central Project

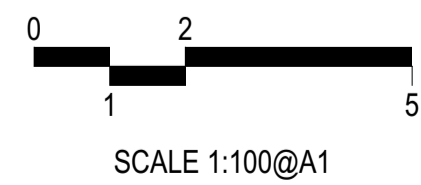
EAST ELEVATION

Date: Wednesday, March 7, 2018
 Drawn: SZ
 Project: Wednesday, March 7, 2018
 File: W:\Projects\2015009 Argusd Tentard development\CAD05
 Arch\CAD\2015009 Argusd Tentard Development 20.plt
 Project#: 2015009 - Revise No.
 2013053SKC501-U



LEGEND

- A** Metal sheet roof Color: Windspray
- B** JH Axon 133 Painted Color: Brown
- C** ColorBond Metal Cladding Color: Surfmist
- D** ColorBond Metal Cladding Color: Ironstone
- E** ColorBond Metal Cladding Color: Deep Ocean
- F** Natural stone Veneer
- G** metal screen
- H** Concrete Finish
- J** Blockwork



**PLANNING and ENVIRONMENT ACT
ALPINE RESORTS PLANNING SCHEME**

PERMIT NO. 2010024370A-1
CONDITIONS 1 a, b, c, f, g, h, i and j
ENDORSED PLAN
Sheet 14 of 21

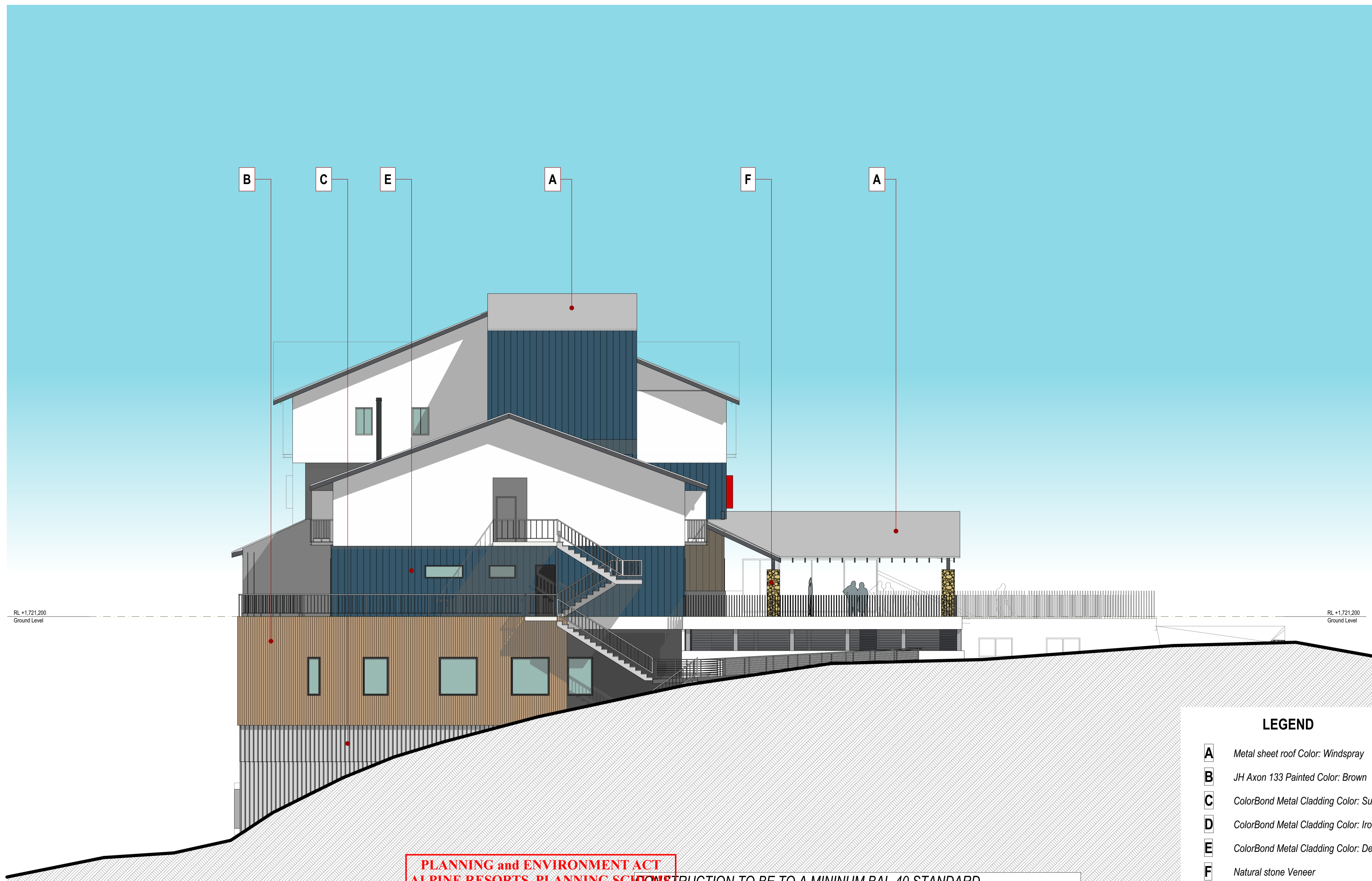
Signed: *Shwood* for
MINISTER FOR PLANNING
Date: 16 MAY 2018

CONSTRUCTION TO BE TO A MINIMUM BAL-40 STANDARD
 IN ACCORDANCE WITH THE RELEVANT SECTIONS OF
 1983-2009 CONSTRUCTION OF BUILDINGS IN A BUSHFIRE PRONE AREA

Davenport Central Project

WEST ELEVATION

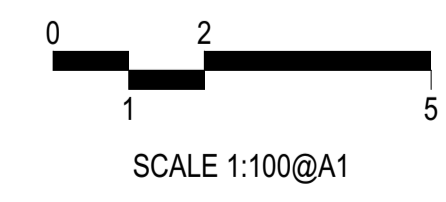
Date: Wednesday, March 7, 2018
 Drawn: SZ
 Project: Wednesday, March 7, 2018
 File: W:\Projects\2015009 Aspen Tarnant development\CAD05
 Arch\CAD\2015009 Aspen Tarnant Development 20.plt
 Project: Drawing: - Rev: 001
 2013053SKC502-U



LEGEND

- A** Metal sheet roof Color: Windspray
- B** JH Axon 133 Painted Color: Brown
- C** ColorBond Metal Cladding Color: Surfmist
- D** ColorBond Metal Cladding Color: Ironstone
- E** ColorBond Metal Cladding Color: Deep Ocean
- F** Natural stone Veneer
- G** metal screen
- H** Concrete Finish
- J** Blockwork

PLANNING and ENVIRONMENT ACT
ALPINE RESORTS PLANNING SCHEMES
 CONSTRUCTION TO BE TO A MINIMUM BAL-40 STANDARD
 IN ACCORDANCE WITH THE RELEVANT SECTIONS OF
 AS3959-2009 CONSTRUCTION OF BUILDINGS IN A BUSHFIRE PRONE AREA
PERMIT NO. 2010024370A-2
CONDITIONS 1 a, b, c, f, g, h, i and k
ENDORSED PLAN
Sheet 15 of 21
 Signed: *Wood* for
MINISTER FOR PLANNING
 Date: 16 MAY 2018



Davenport Central Project

SOUTH ELEVATION

Date: Wednesday, March 7, 2018
 Drawn: SZ
 Project: Wednesday, March 7, 2018
 File: W:\Projects\201509 Aspen Tarnant development\CAD05
 Arch\CAD\201509 Aspen Tarnant Development 20.plt
 Project: Davenport - Tarnant
 2013053SKC503-U





LEGEND

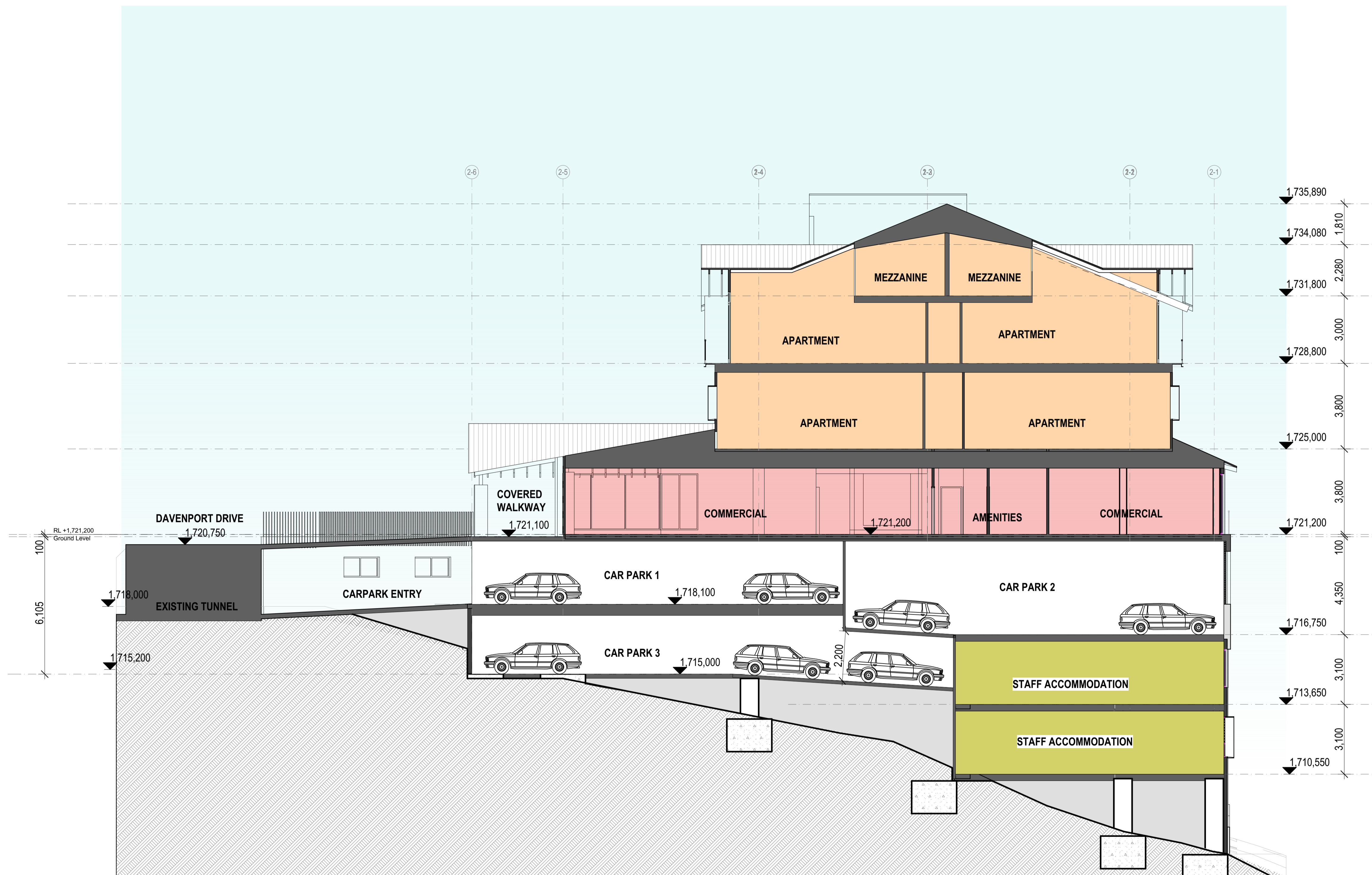
- A** Metal sheet roof Color: Windspray
- B** JH Axon 133 Painted Color: Brown
- C** ColorBond Metal Cladding Color: Surfmist
- D** ColorBond Metal Cladding Color: Ironstone
- E** ColorBond Metal Cladding Color: Deep Ocean
- F** Natural stone Veneer
- G** metal screen
- H** Concrete Finish
- J** Blockwork

PLANNING and ENVIRONMENT ACT
ALPINE RESORTS PLANNING SCHEME
 CONSTRUCTION TO BE TO A MINIMUM BAL-40 STANDARD
 IN ACCORDANCE WITH THE RELEVANT SECTIONS OF
 AS3959-2009 CONSTRUCTION OF BUILDINGS IN A BUSHFIRE PRONE AREA
PERMIT NO. 2010024370A-2
CONDITIONS 1 a, b, c, f, g, h, i and k
ENDORSED PLAN
Sheet 16 of 21
 Signed: *Wood* for
MINISTER FOR PLANNING
 Date: 16 MAY 2018

NORTH ELEVATION

Davenport Central Project

Date: Wednesday, March 7, 2018
 Drawn: SZ
 Project: Wednesday, March 7, 2018
 File: W:\Projects\2015009 Asgard Tarnant development\CAD05
 Arch\CAD\2015009 Asgard Tarnant Development 20.plt
 Project: - Drawing: - Revise: 01
 2013053SKC504-U



**PLANNING and ENVIRONMENT ACT
ALPINE RESORTS PLANNING SCHEME**

**PERMIT NO. 2010024370A-2
CONDITIONS 1 a, b, c, f, g, h, i and k
ENDORSED PLAN
Sheet 17 of 21**

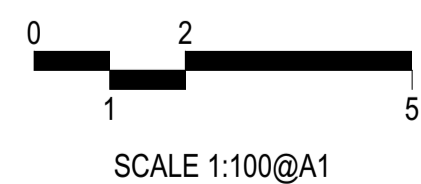
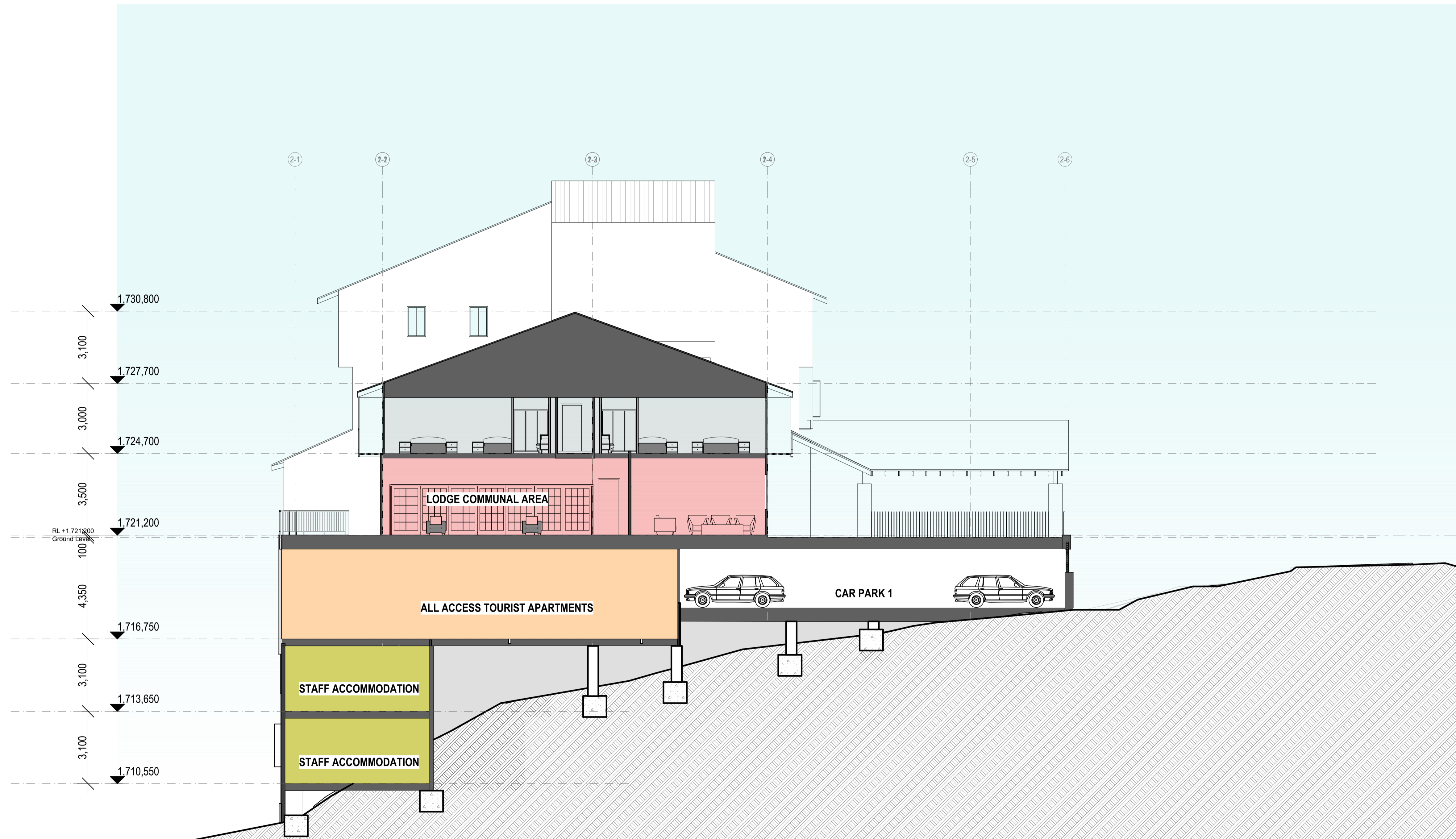
Signed: *Wood* for
MINISTER FOR PLANNING
Date: 16 MAY 2018

CONSTRUCTION TO BE TO A MINIMUM BAL-40 STANDARD
IN ACCORDANCE WITH THE RELEVANT SECTIONS OF
AS3959-2009 CONSTRUCTION OF BUILDINGS IN A BUSHFIRE PRONE AREA

Davenport Central Project

CROSS SECTION A-A

Date: Wednesday, March 7, 2018
Drawn: SZ
Printed: Wednesday, March 7, 2018
File: W:\Projects\2015009 Asgard Terntari development\CAD05
Arch\CAD\2015009 Asgard Terntari Development 20.plt
Project: - Drawing: - Revise: 01
2013053SKC505-U



**PLANNING and ENVIRONMENT ACT
ALPINE RESORTS PLANNING SCHEME**

**PERMIT NO. 2010024370A-2
CONDITIONS 1 a, b, c, f, g, h, i and k
ENDORSED PLAN
Sheet 18 of 21**

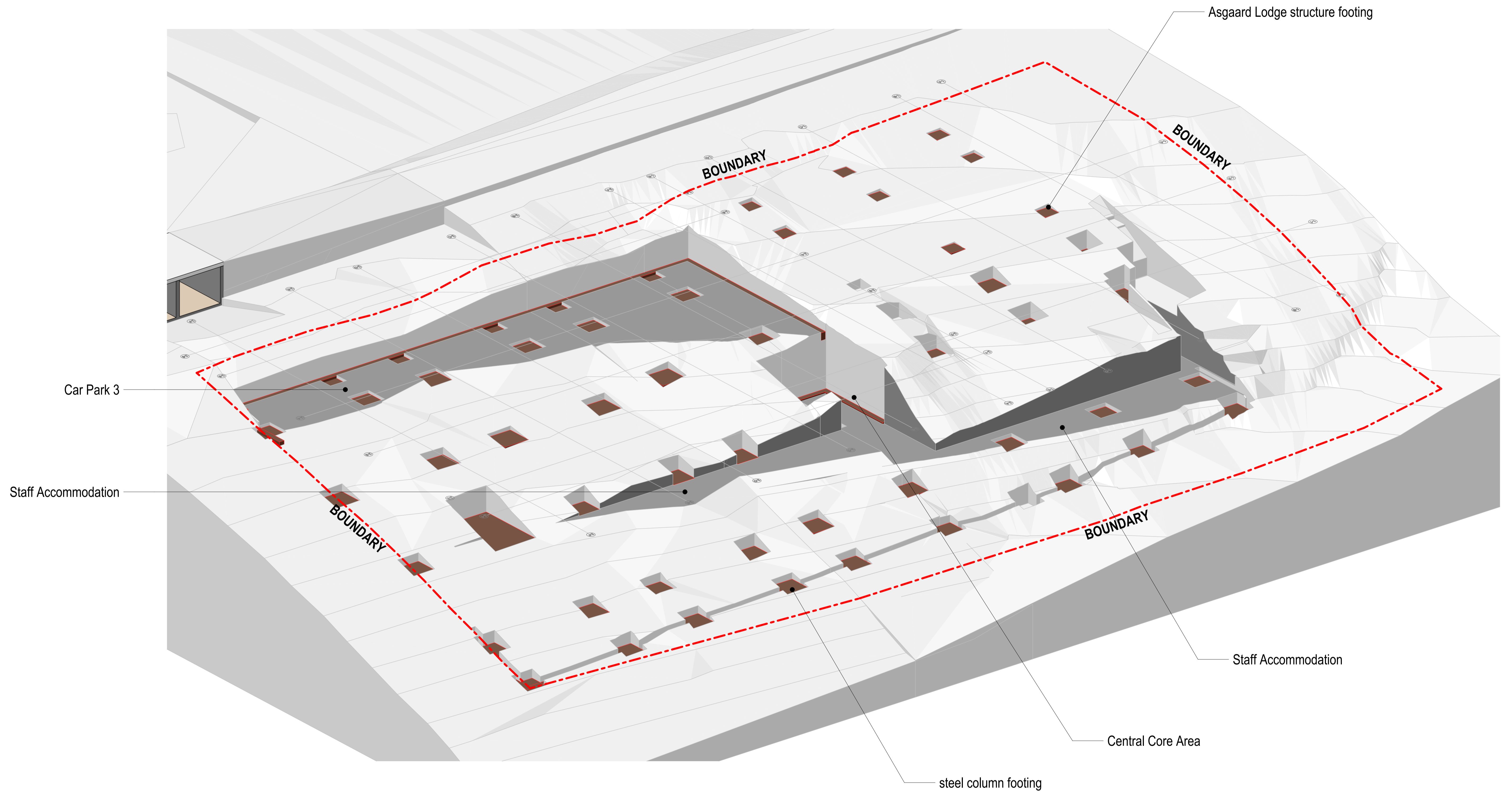
Signed: *Wood* for
MINISTER FOR PLANNING
Date: 16 MAY 2018

CONSTRUCTION TO BE TO A MINIMUM BAL-40 STANDARD
IN ACCORDANCE WITH THE RELEVANT SECTIONS OF
AS3959-2009 CONSTRUCTION OF BUILDINGS IN A BUSHFIRE PRONE AREA

Davenport Central Project

CROSS SECTION B-B

Date: Wednesday, March 7, 2018
Drawn: SZ
Printed: Wednesday, March 7, 2018
File: W:\Projects\2015009 Asgard Tentart development\CAD005
Arch\CAD\2015009 Asgard Tentart Development 20.plt
Project: - Drawing: - Revision: -
2013053SKC506-U



**PLANNING and ENVIRONMENT ACT
ALPINE RESORTS PLANNING SCHEME**

**PERMIT NO. 2010024370A-2
CONDITIONS 1 a, b, c, f, g, h, i and k
ENDORSED PLAN
Sheet 19 of 21**

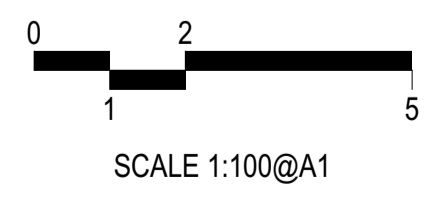
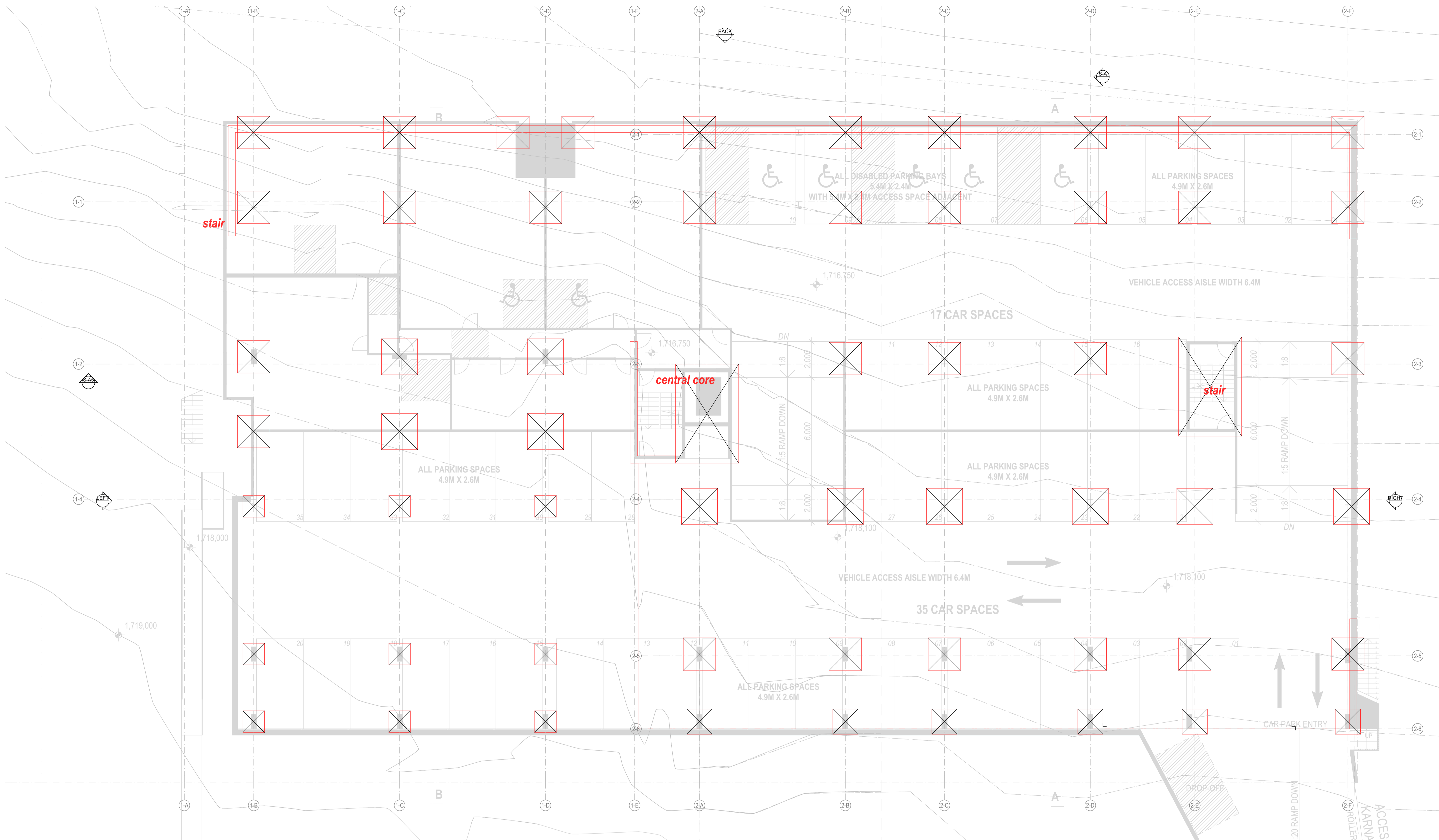
Signed: *Shwood* for
MINISTER FOR PLANNING
Date: 16 MAY 2018

**CONSTRUCTION TO BE TO A MINIMUM BAL-40 STANDARD
IN ACCORDANCE WITH THE RELEVANT SECTIONS OF
AS3959-2009 CONSTRUCTION OF BUILDINGS IN A BUSHFIRE PRONE AREA**

Davenport Central Project

EXCAVATION DIAGRAM

Date: Wednesday, March 7, 2018
Drawn: SZ
Printed: Wednesday, March 7, 2018
File: W:\Projects\2015009 Asgard Tentard development\CAD05
Arch\CAD\2015009 Asgard Tentard Development 20.plt
Project#: 2015009 - Rev: 001
2013053SKC801-U



NOTE:
FOOTINGS REFER TO ENGINEER'S DESIGN

**PLANNING and ENVIRONMENT ACT
ALPINE RESORTS' PLANNING SCHEME**

**PERMIT NO. 2010024370A-2
CONDITIONS 1 a, b, c, f, g, h, i and k
ENDORSED PLAN
Sheet 20 of 21**

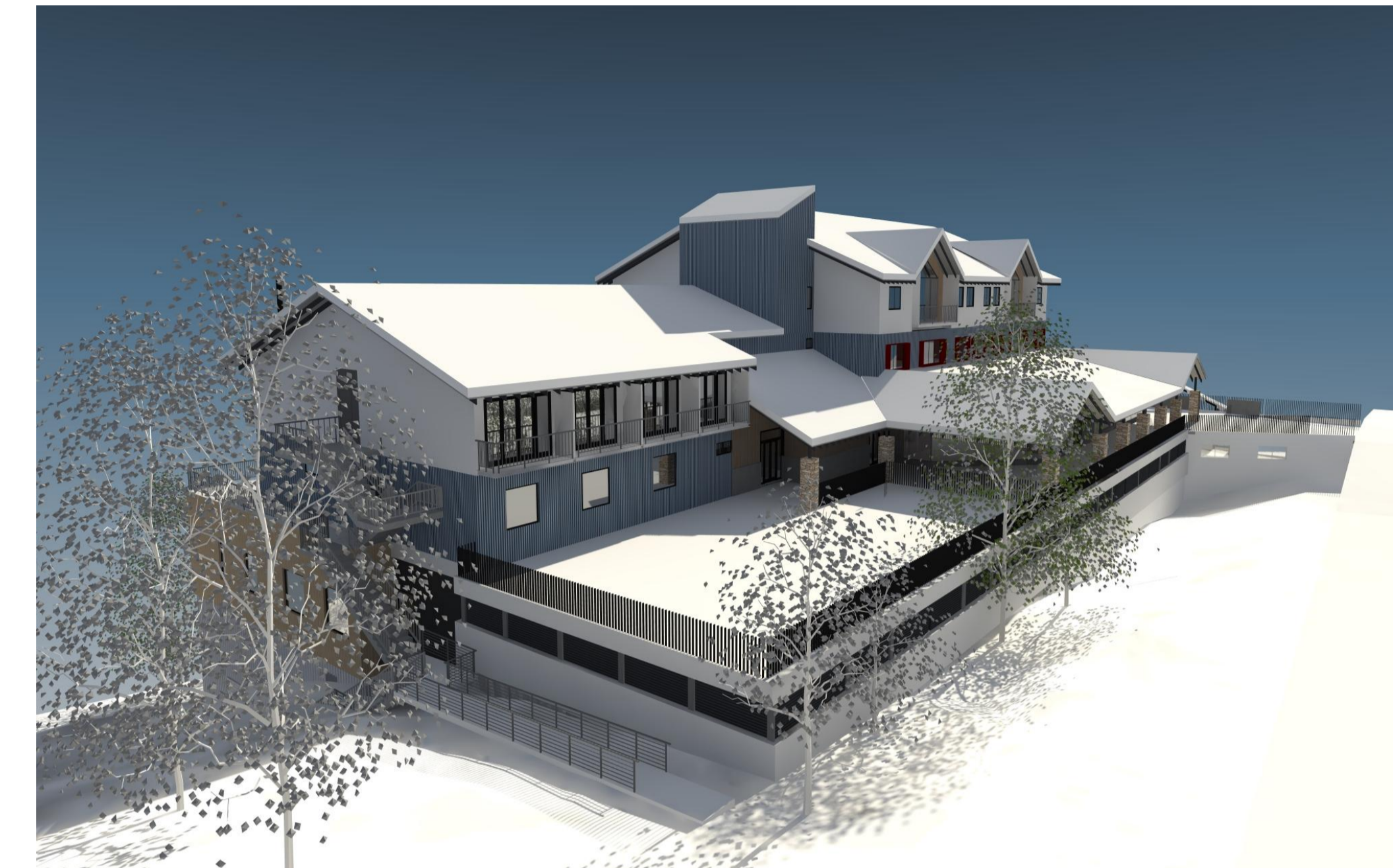
Signed: *Wood* for
MINISTER FOR PLANNING
Date: 16 MAY 2018

**CONSTRUCTION TO BE TO A MINIMUM BAL-40 STANDARD
IN ACCORDANCE WITH THE RELEVANT SECTIONS OF
AS3959-2009 CONSTRUCTION OF BUILDINGS IN A BUSHFIRE PRONE AREA**

Davenport Central Project

SUB FLOOR PLAN

Date: Wednesday, March 7, 2018
Drawn: SZ
Printed: Wednesday, March 7, 2018
File: W:\Projects\201509 Aspen Tarnant development\CAD05
Arch\CAD\201509 Aspen Tarnant Development 20.plt
Project: - Drawing: -
2013053SKC802-U
P. 8488200



**PLANNING and ENVIRONMENT ACT
ALPINE RESORTS PLANNING SCHEME**

**PERMIT NO. 2010024370A-2
CONDITIONS 1 a, b, c, f, g, h, i and k
ENDORSED PLAN
Sheet 21 of 21**

Signed: *Wood* for
MINISTER FOR PLANNING
Date: 16 MAY 2018

Davenport Central Project

PERSPECTIVE VIEWS

Date: Wednesday, March 7, 2018
Drawn: SZ
Printed: Wednesday, March 7, 2018
File: W:\Projects\2015009 Aspen Tarnant development\CAD05
Arch\CAD\2015009 Aspen Tarnant Development 20.plt
Project#: 2015009 - Aspen Tarnant
2013053SKC901-U